

SECIL  ARGAMASSAS



SecilVit CORK

EXTERNAL THERMAL INSULATION SYSTEM

100% NATURAL

SecilVit CORK

MAXIMUM THERMAL, ACOUSTIC AND ENVIRONMENTAL PERFORMANCES

The **SecilVit CORK** system links the superior thermal performance of an ETICS system with an efficient environmental performance.

Effectively, the use of 100% natural expanded cork panels on the total external cover of a building, ensures the maximum thermal insulation and a significant acoustic protection, simultaneously preserving the environment.

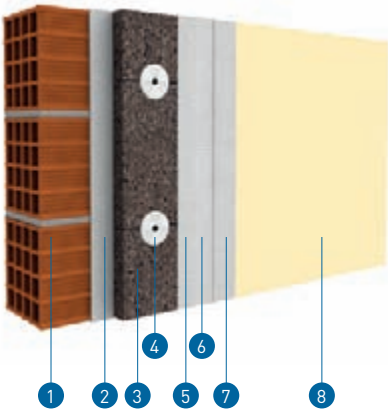
Natural and renewable (extracted from the cork-oak tree every 9 years), the cork supplied by Secil Argamassas in the **SecilVit CORK** system is a breathable insulating material, free from any chemicals, synthetic resins

or carcinogenic materials, which contributes for a healthy environment inside our homes. The cork's low thermal conductivity ($\lambda=0,037$ W/m.K) offers a high energy efficiency, thus contributing for an environmental and economic saving. The adhesive mortar

ADHERE Vit ecoCORK, constituted also by Hidraulic Natural Lime and cork aggregates, ensure the perfect compatibility and secure the correct fixing of the insulation cork panels completed by the **REABILITA CAL FINISHING**, 100% Hidraulic Natural Lime mortar and an effective protection against harsh weather.



1 APPLICATION



LEGEND

- 1 Substrate
- 2 **ADHERE Vit ecoCORK**
- 3 Cork Insulation Panel
- 4 SeciVit Anchor
- 5 **ADHERE Vit ecoCORK**
- 6 SeciVit Mesh 160
- 7 **ADHERE Vit ecoCORK**
- 8 **REABILITA CAL FINISHING**
(Requires a water-based or silicate-based finish)

2 PRODUCTS



ADHERE Vit ecoCORK

With Cork aggregates and NHL, it's a mortar of high performances for the fixing, levelling and reinforcement of the cork panels over usual substrates, in new construction, and over old substrates in rehabilitation works.

THEORETICAL CONSUMPTION

3,2 kg/m² for fixing
1,3 kg/m² for plastering

PACKAGING

20kg bags
60 bags per pallet



REABILITA CAL FINISHING

Natural, ocre or brick colour
Natural Hydraulic Lime mortar, of high performances for the finishing of the **SeciVit CORK** system.

THEORETICAL CONSUMPTION

2 kg/m²

PACKAGING

25kg bags
60 bags per pallet

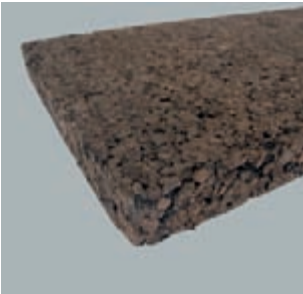
PRODUCT TECHNICAL TABLES

Thickness (mm)	Thermal Resistance R (m ² .K/W)
60	1,50
80	2,00
100	2,50
120	3,00
140	3,50
160	4,00
180	4,50
200	5,00

Expanded insulation cork panel	
DENSITY	Approx. 120 kg/m ²
THERMAL CONDUCTIVITY	0,037/0,040 W/m.K
RESISTANCE TO COMPRESSION AT 10% DEFORMATION (EN 826)	100 Kpa
PERPENDICULAR FACE RESISTANCE (EN 1607)	60 Kpa (TR50)
DIMENSIONAL STABILITY	Stable: does not expand or contract
LONGITUDE TOLERANCE (EN 822)	Between +/- 3 y 5 mm
THICKNESS TOLERANCE (EN 823)	Between +/- 1 y 2 mm
SERVICE TEMPERATURE	-180 °C to +120 °C
REACTION TO FIRE (EN 13501-1)	Class E
WATER ABSORPTION (EN 1609)	0,36 Kg/m ²
RESISTANCE TO WATER VAPOUR DIFUSION	5-30 µ
WATER VAPOUR CONDUCTIVITY	0,017 à 0,003 g/mh mm of section
DURABILITY	Practically unlimited
CERTIFICATIONS (EN 13170 + EN 13172)	CSTB (France) and LNEC (Portugal)
DIMENSION OF BOARDS (*)	1000x500 mm
BOARD THICKNESS	10 to 320 mm

(*) Also available in Tongue and Groove system

3 ACCESSORIES



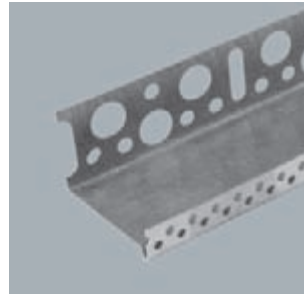
Insulation Cork Panel

Cork insulation panel with high thermal and acoustic performances
 $\lambda = 0,037 \text{ W/m.K}$; Dimensions: 1000 x 500 mm (Length x width)
 Available in 60 to 200 mm thickness



SeciVit Mesh 160 SeciVit Mesh 343

Mesh with double torsion wires, 100% fibreglass, with anti-alkaline treatment, width 100cm
R160: 160gr/m²; mesh size: 4x5mm (+10%);
R343: 343 g/m²; mesh size: 6x6mm (+5%)



SeciVit Aluminum Start-up Profile

Straight start-up profile, in aluminum, with dripper;
 length 2,5m



SeciVit Fixing Screw

For the fixation of start-up profiles
CONSUMPTION: 4 to 5 units/profile



SeciVit Spacer

Spacer for start-up profile
THICKNESSES: 2, 3, 4, 5 and 10mm



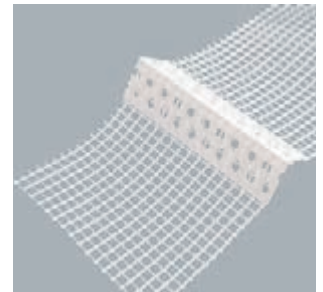
SeciVit Fixing Plug for masonry substrates

Expansive fixing plug with polypropylene nail for masonry or concrete
CONSUMPTION: 6 to 10 units/m², depending on the fixing requirements



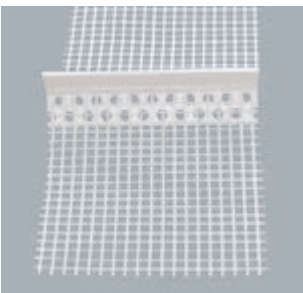
SeciVit Fixing Plug for wood substrates

Fixing plug with polypropylene nail for wood, OSB and Viroc substrate
CONSUMPTION: 6 to 10 units/m², depending on the fixing requirements



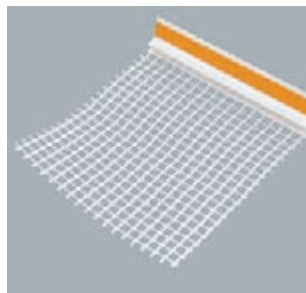
SeciVit PVC Corner Profile

PVC corner profile with net incorporated, length 2,5m



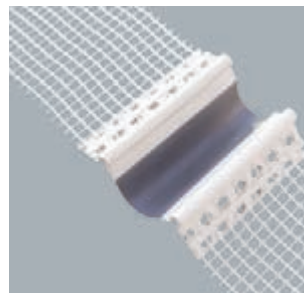
SeciVit Dripper Profile

PVC dripper profile, with net incorporated, for horizontal surfaces;
 length 2,5m



SeciVit Window Trimming Profile

PVC window trimming profile, with net incorporated, length 2,5m



SeciVit Expansion Joint Profile

PVC expansion joint profile;
 length 2,5m

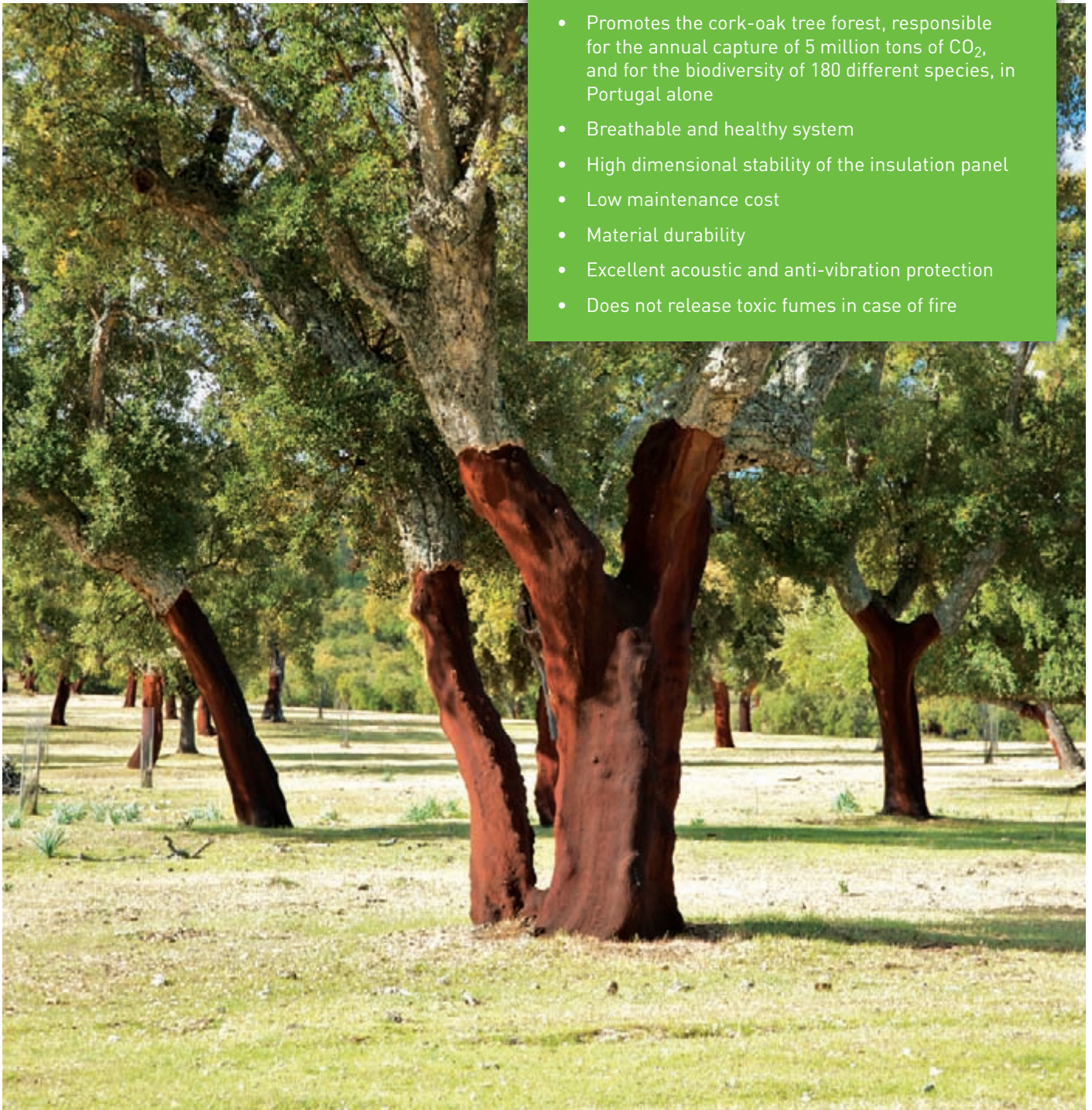
NHL and CORK

THE PERFECT MATCH

With a clearly superior ductility and ability to withstand high tensions which may cause cracking, mortars based on NHL and Cork aggregates also have a low permeability resistance to water vapor, taking advantage of the full potential of the Cork insulation panels. Cork, a renewable raw material, 100% natural and a thermal insulation material, acoustic and anti-vibration - its addition in mortars offers the guarantee of increased durability, without losing its resistance and adhesion characteristics.

ADVANTAGES

- Excellent thermal protection
- High thermal inertia
- Reduction of energy costs
- Superior environmental performance
- 100% Natural and renewable insulation
- Recyclable system
- Promotes the cork-oak tree forest, responsible for the annual capture of 5 million tons of CO₂, and for the biodiversity of 180 different species, in Portugal alone
- Breathable and healthy system
- High dimensional stability of the insulation panel
- Low maintenance cost
- Material durability
- Excellent acoustic and anti-vibration protection
- Does not release toxic fumes in case of fire



Distributed by:



Secil Argamassas
Apartado 2, 2406-909 Maceira LRA
PORTUGAL

Tel.: +351 244 770 220
Fax: +351 244 777 997

Email: comercial@secilmartinganca.pt
Site: www.secilmartinganca.pt

 **SECIL
ARGAMASSAS**
Faz parte da Solução