

# SECIL ARGAMASSAS



***SecilVit Natural cork insulation  
For a warmer, quieter home***

## **Why insulate?**

Reduced condensation

Reduced heating costs

Reduced carbon

Warmer, more comfortable building

## **Why cork?**

Sustainable

Good thermal performance

Good acoustic performance

Reduced vibration from traffic

Totally natural

Proven longevity

Good value

## **Applications**

External wall insulation

Timber frame panel infills

Internal wall/ceiling insulation

Roof, loft, floor insulation

**Types:** Most reasonably level surfaces, including:

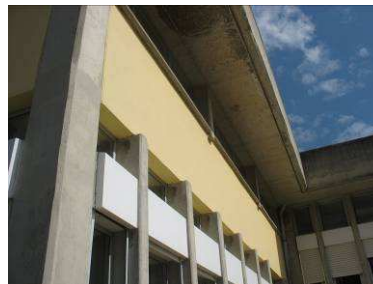
## NEW BUILD:

- Lightweight concrete blocks.
- Current or lightweight concrete walls.
- Precast concrete panels.
- Precast panels – Viroc, OSB, etc.
- Timber frame infill panels.
- Brick masonry, concrete blocks or stone.



## RENOVATION:

- Stone rubble & dressed stone.
- Bricks.
- Timber frame infill panels.



## Identify the suitability of the substrate etc.

- Sound structure?
- Flatness?
- How much levelling is required?
- Will fixings be secure?
- Moisture content?
- Area to be covered.
- What u-value is required/desired?
- Alterations required to window sills etc.
- Is roof overhang sufficient?
- Identification of structural joints and prescription of adequate treatment.
- Removal of old paints or render?



## 1.Preparation

Ensure that the substrate is level. Level with appropriate mortar as required. And allow to dry.



## 2.Placing and laying of the boards

If used externally, fix the correct size starter profile base rail, level and off the floor. Glue the boards with Secil Adhere Vit mortar continuously over back of the board with a 10mm teathed trowel. Do not apply the mortar around the edges of the panels. These should remain clean of any residues of Adhere Vit. The Secil Vit cork insulation board can now be firmly pushed against the wall. Start with the first boards firmly placed on the base rail and work up with the short side vertical and the joints staggered as if laying bricks. Leave for a minimum of about 24hours for the Adhere Vit to harden.



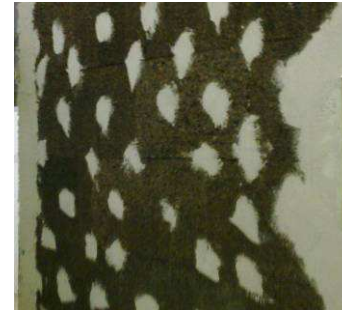
### 3. Mechanical fixing of the boards

The fixing of the thermal insulation boards is complete when the plastic fixings are applied, with a minimum length equal to the board thickness + 30 mm. Please ensure at least 6 plastic fixings for every square meter. Simply drill the correct depth hole and hammer home so it is not proud of the board.



### 4. Levelling with ADHERE Vit ecoCork

Cover the areas with mechanical fixings by applying ADHERE Vit if required in order to obtain a levelled surface on the cork boards.



### 5. Reinforcement with fibreglass mesh

Reinforcing specific areas, such as corners or transitions between different materials, alkali resistant mesh SecilVit Net 160 fixed over the whole of the thermal insulation panels. On all edges, PVC reinforcement profiles SecilVit Corner Profile should be placed directly to the insulation panels with the adhesive mortar ADHERE Vit. Always place extra mesh across corners of windows and doors where stress fractures may occur.



## 6. Plastering with ADHERE Vit

Apply the adhesive mortar ADHERE Vit over the board surface, using a 6mm toothed trowel.



## 7. Imbedding the mesh

Whilst the Adhere Vit is still soft, and toothed, carefully press the alkali resistant fibreglass mesh SecilVit Net 160 into the Adhere Vit making sure that the toothed gaps remain behind the mesh. The mesh should be overlapped by approximately 10 cm/4".



## 8. 2nd Layer of ADHERE Vit

Approximately 12-24 hours after the first layer and when it is hard, apply the second and final layer of ADHERE Vit completely covering the mesh.



## 9. Final coats

After around 12-24 hours, the first application of Secil Finishing Render may be applied at about 1.5mm.

A further 4-24 hours should lapse before a second 1.5mm application of Secil Finishing Render is applied. This can be finished with a sponge, trowel or wooden float as preferred.

If applied internally, it is possible to use a lime putty based plaster finish instead.

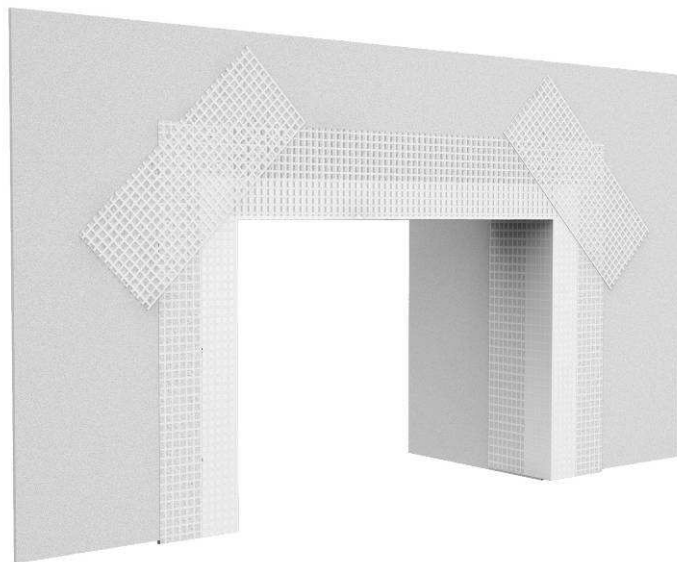
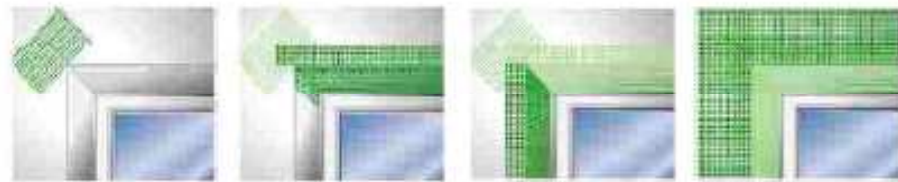


## 10. Decoration

Externally, a vapour permeable paint must be used. White Peak limewash may be applied at 4-5 coats after perhaps 5 x days. A silicate masonry paint system can only be applied after 30 days or more.

If applied internally, there are many more paint options available.







SecilVit Cork board  
Available 500 x 1000mm in  
either 40,60,80,100mm  
thickness.  
K value = 0.036-0.040 w/mk



AdhereVit Mortar  
25kg bag



SecilVit Finishing render  
25kg bag = 5.2m<sup>2</sup>@3mm

